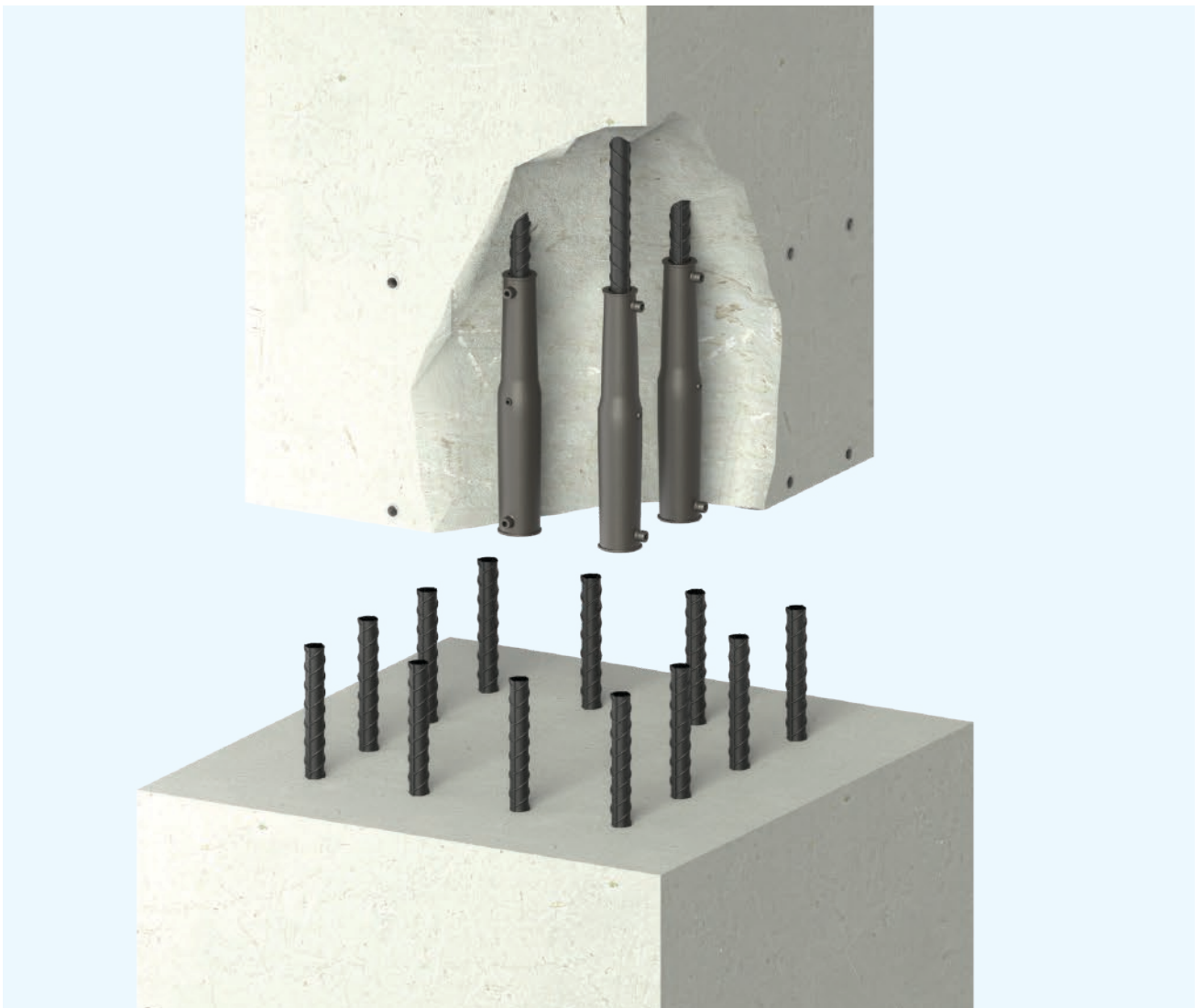


Structural Connections
Precast Connections

Leviat®

Moment MGC-F Grout Coupler

For joining precast concrete elements



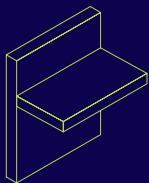
South East Asia and India Edition

May 2026

Imagine. Model. Make.

Leviat®

We imagine, model and make engineered products and innovative construction solutions that help turn architectural visions into reality and enable our construction partners to build better, safer, stronger and faster.

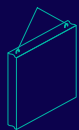


Structural Connections

Systems to form robust, efficient connections, and continuity of concrete reinforcement as necessary, between walls, slabs, columns, beams and balconies, providing structural integrity as well as enhanced thermal and acoustic performance.

- Insulated Balcony Connectors
- Reinforcing Bar Couplers
- Concrete Connections
- Reinforcement Continuity Systems
- Punching Shear Reinforcement
- Shear Load Connectors
- Floor Joint Systems
- Precast / Reinforced Columns
- Infrastructure Products
- Precast Connections
- Acoustic Dowels and Bearings
- Prestress

Other areas of expertise:



Lifting & Bracing

Systems for the safe and efficient transportation, lifting and temporary bracing of cast concrete elements and tilt-up panels before permanent structural connections are made.



Façade Support & Restraint

Systems for the safe and thermally-efficient fixing of the external building envelope, including brick and natural stone, insulated sandwich panels, curtain walling and suspended concrete façades, and also the repair and strengthening of existing masonry installations.



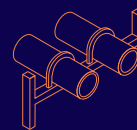
Anchoring & Fixing

Systems for fixing secondary fixtures to concrete, including anchor channels, bolts and inserts; also tension rod systems for roofs and canopies.



Formwork & Site Accessories

Non-structural accessories that complement our engineered solutions and help keep your construction environment operating safely and efficiently, including moulds for casting standard and special concrete elements and construction essentials such as reinforcing bar spacers.



Industrial Technology

Mounting channels, pipe clamps and other versatile framing systems that provide safe fixing in a wide range of industrial applications.

Leviat product ranges:

Ancon | Aschwanden | Connolly | Halfen | Helifix | Isedio | Meadow Burke | Modersohn | Moment | Plaka | Scaldex | Thermomass

Moment MGC-F Grout Coupler

Specifically made for precast concrete connections.

The Moment MGC-F Grout Coupler is used for joining together precast concrete elements. It consists of a sturdy one piece metal sleeve suitable for all construction applications, which is then filled with a high strength, flow-able, shrinkage equalized grout to provide a bond between the starter bar and the grout coupler sleeve. Different sizes available to match the exact design conditions of the project. Each of which has a series of accessories to assist with the installation and make sure that no excessive grout leakage can occur.

- Robust one piece metal construction limits the number of interfaces that would require quality controls.
- Provide ease of installation in the precast yard, as it requires no threading or other bar end preparation.

The on-site grouting of the columns can be achieved in two different ways:

- Single component grouting to provide flexibility on the grout that is then used for filling the mortar bed underneath the column.
- Mass grouting of all the grout couplers and bed joint in one process and with the same grout, to reduce overall installation times and increase productivity.

Hybrid system for brace free connections.

- If used in combination with the precast shoe components in each corner, it can provide a cost effective hybrid column connection that does not require any temporary bracing. For more information about the hybrid system, please contact your local Leviat office.

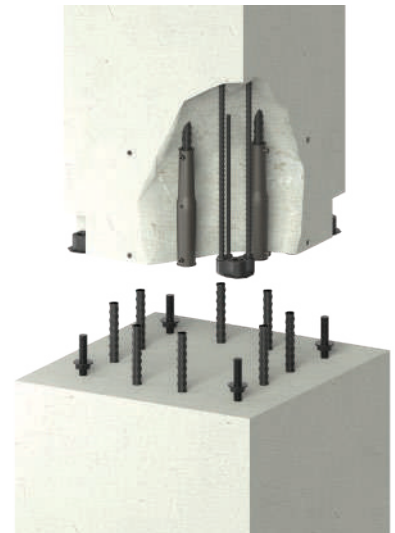
Moment Hybrid System



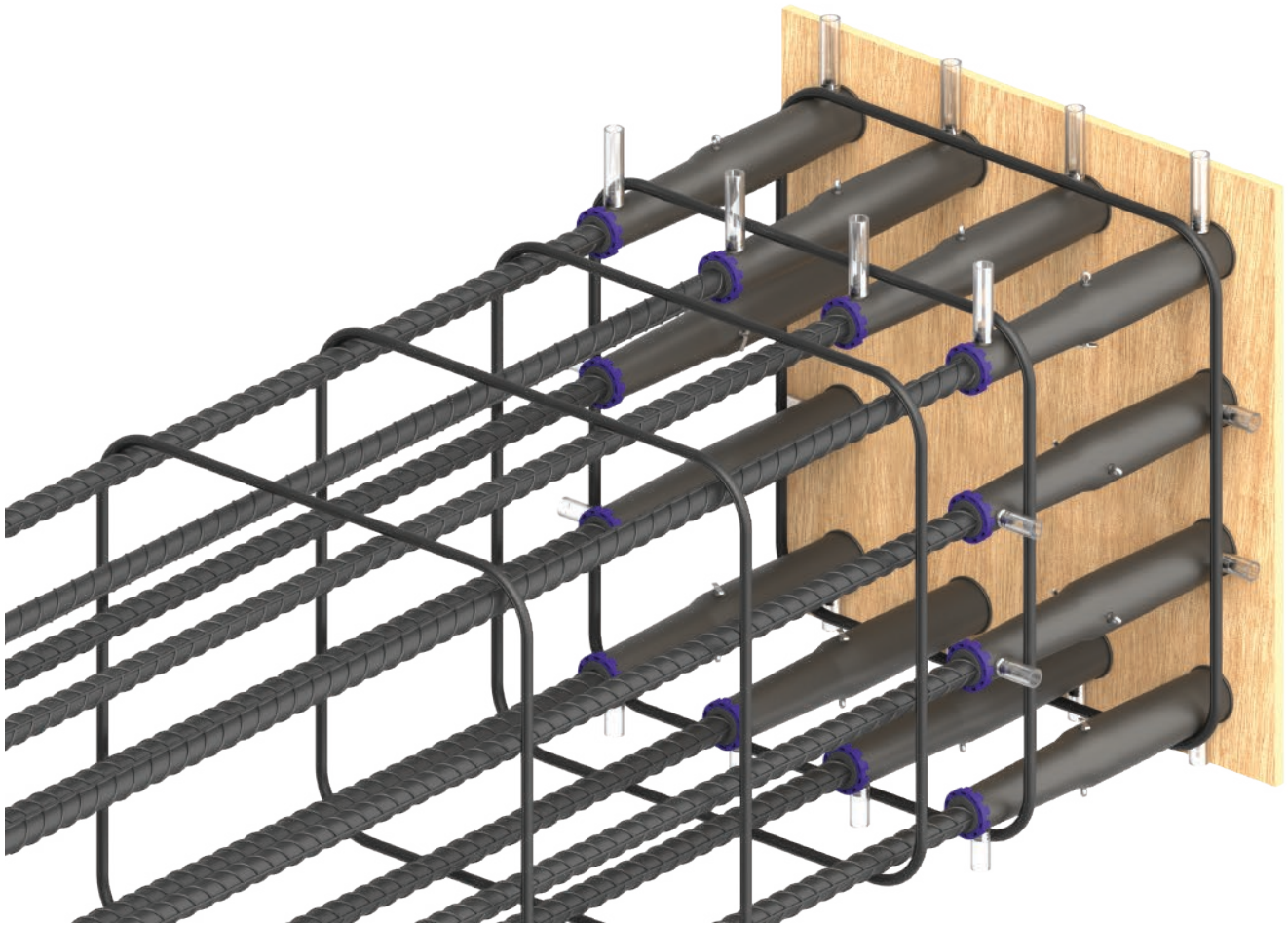
Moment MGC-F Grout Coupler



Moment MPS-T Precast Shoe



MGC-F Hybrid



Advantages for the Procurement Professional

- Leviat's broad range of specialist precast products mean that all the necessary precast accessories can be acquired from a single source, significantly simplifying the logistics, paperwork and liability.

Advantages for the Precast Element Producer

- Full set of accessories to enable fast and secure connection of the grout coupler to the formwork.
- Fast and simple assembly with no bar end preparation required.

Advantages for the Design Engineer

- 'Bar Break' system up to 715 MPa Equivalent stress in the reinforcing bar.
- Tested to meet the Category B requirements of Strength, Ductility, and slip under static forces, in accordance with ISO15835:2018 for grade B500B reinforcing bar.
- Also tested to meet the 'Static & Cyclictensile', 'Slip' and 'Low Cycle Fatigue', requirements of IS16172 for grade FE550D reinforcing bar.

Advantages for the Assembly Crew on site

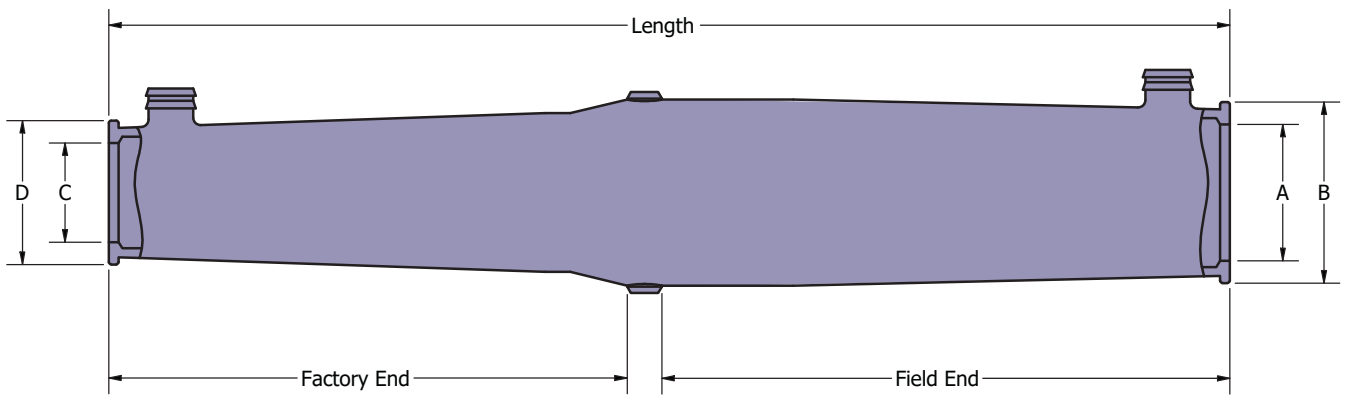
- Leviat's long standing experience in selling grouted couplers makes us the ideal partner to provide bespoke advice on the most efficient grouting process for you to use.
- Optimised grouting will not only reduce the manpower required on site but will also reduce the construction programme.

The Moment MGC-F Grout Coupler is ideal for precast connections where additional tolerance is needed.

To ensure the correct engagement of the bars inside the coupler, the Moment MGC-F Grout Coupler comes with a centre pin that acts as a bar stop.

Grout Requirement

- MC-Bauchemie Emcekrete HP 100
- ULTRATECH NS1 Power Grout



Dimensions and Availability

Product Code	Rebar	A (mm)	B (mm)	C (mm)	D (mm)	Length (mm)	Minimum Bar Insertion (mm)	Maximum Bar Insertion (mm)	
								Factory End	Field End
MGC-F12	12	28	46	18	36	187	78	83	97
MGC-F16	16	32	50	22	40	239	104	108	123
MGC-F20	20	37	56	26	45	291	130	134	150
MGC-F25	25	48	67	33	52	361	162.5	167	187
MGC-F32	32	55	75	40	60	452	208	212	232
MGC-F40	40	66	87	51	72	556	260	264	284

Notes: These dimensions are indicative and may vary from time to time. Any variations will not affect the compliance to test requirements.

Accessories



Position Plug (MGC PP)

Position plugs are used to secure Moment MGC-F Grout Coupler onto the formwork at the precast factory. This item is reusable and should be visually inspected before each use. This item is not supplied together with the grout coupler.



End Seal (MGC ES)

The end seal is used when the contractor opts for individual grouting method. The purpose of the end seal is to prevent grout egress on site. It can only be used once. This item is not supplied together with the grout coupler.



End Cap (MGC EC)

The end cap is specifically used for Moment MGC-F Grout Coupler. This one-time use accessory will be supplied along with the Moment MGC-F Grout Coupler. The end cap is designed to prevent concrete from entering the grout coupler during the casting phase at the precast factory.



Dust Cap (MGC DC)

Dust cap is used in precast factory after demoulding to cover the end of the grout coupler and prevent dirt from entering before site installation. This single use item will be supplied along with Moment MGC-F Grout Coupler.



Clear Hose (MGC CH)

The clear hose with an internal diameter of 19mm is used to create a grouting channel from the outside of the precast element to the grout coupler. This will be done in the precast factory. The clear hose can only be used once. This item is not supplied together with the grout coupler.

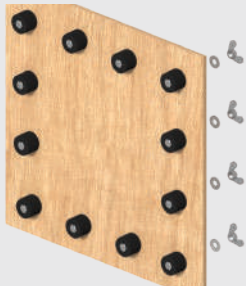


Hose Cap (MGC HC)

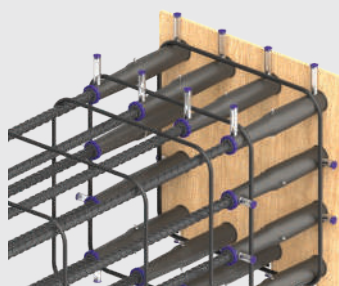
Hose cap is a stopper for the clear hose that is used to prevent grout from overflowing. This single-use item will be used on site after grouting. This item is not supplied together with the grout coupler.

Installation Instruction

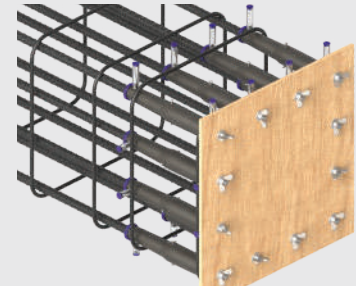
At the Precast Yard



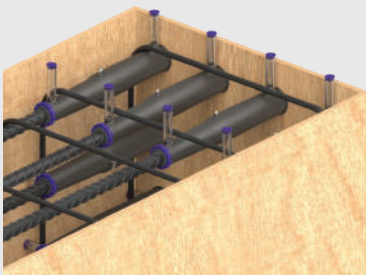
- 1 Install the position plugs onto the formwork. Secure using washer and wing nut, do not over tighten.



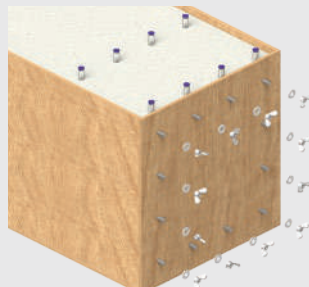
- 2 Install the clear hoses on the Moment MGC-F Grout Couplers. Install the hose caps on all the clear hoses. Then, slide the grout couplers onto the position plug.



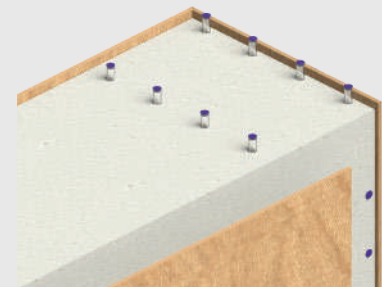
- 3 Tighten the wing nuts.



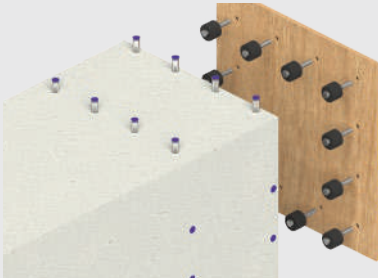
- 4 Attach the rest of the formwork. (Additional grouting hoses are necessary for mass grouting method).



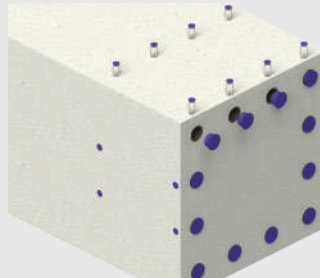
- 5 After curing, remove the wing nuts and washers.



- 6 Remove the side formwork.

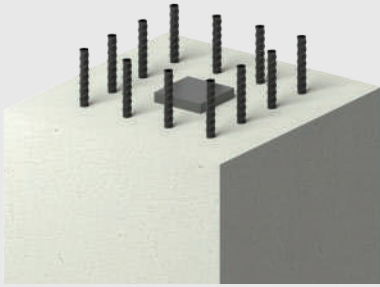


- 7 Remove the position plugs. This part is reusable.

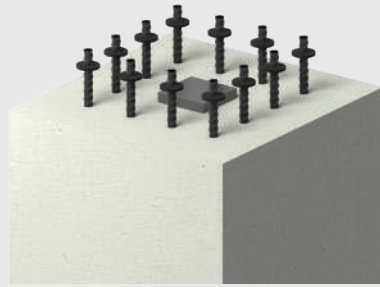


- 8 Install the dust caps.

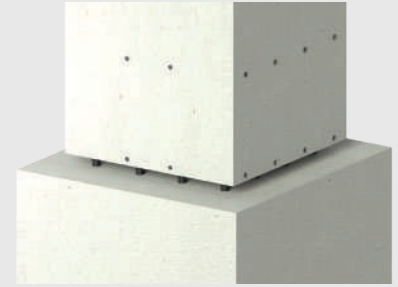
Option A: Individual grouting on the construction site



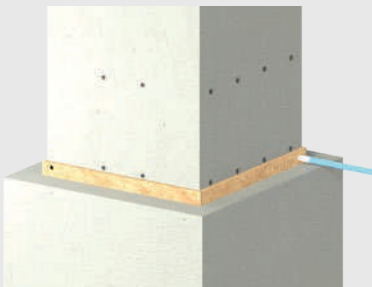
- 9** Cast starter bars into the foundation using a suitable template to ensure the location and verticality of the bars.



- 10** For individual coupler grouting method, insert the end seal onto the starter bar.



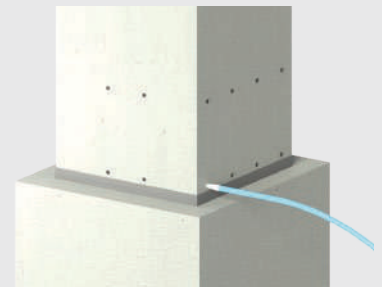
- 11** Remove the dust caps. Lower the column onto the starter bars, leaving a small gap to the foundation. Apply any temporary braces as necessary.



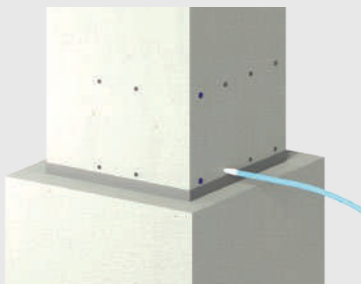
- 12** Attach the base formwork and start pumping the grout into the base.



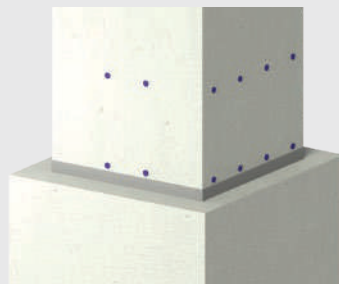
- 13** Once the grout overflows from the formwork hole, close both holes using a suitable method.



- 14** After the base grout is cured, removed the formwork. Start pumping the grout into the lower grouting hole of the coupler.

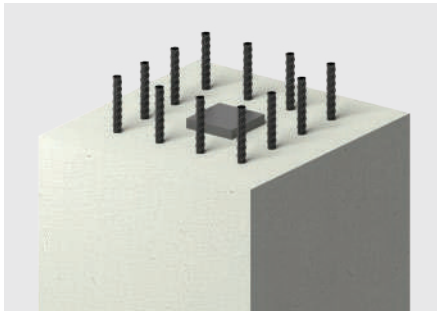


- 15** Then, after the grout overflows from the upper grouting hole of the coupler, close the upper and lower hole using a hose cap. Repeat steps 14 and 15 for the remaining couplers.

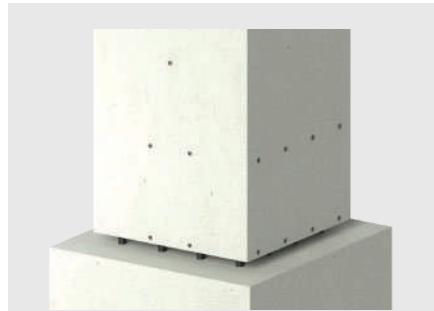


- 16** The braces may be removed 3 days after the completion of grouting.

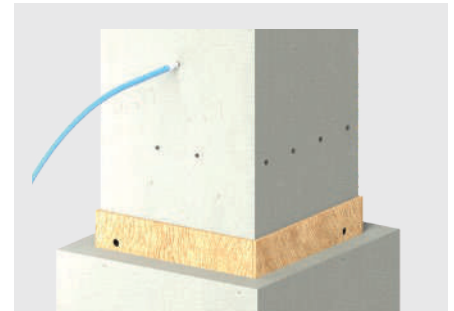
Option B: Mass grouting on the construction site



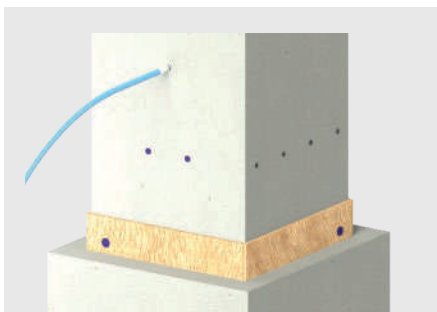
- 9** Cast the starter bars into the foundation using a suitable template to ensure the location and verticality of the bars.



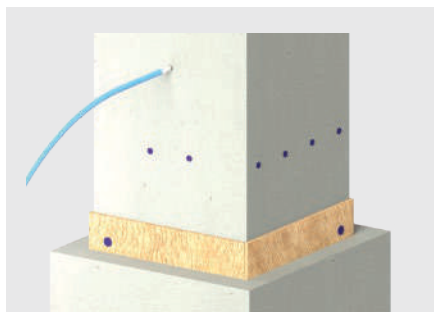
- 10** Remove the dust caps. Lower the column onto the starter bars, leaving a small gap to the foundation. Apply any temporary braces as necessary.



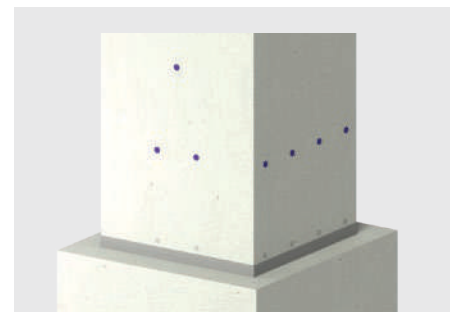
- 11** Attach the base formwork to cover the bottom grouting holes and start pumping the grout into the grouting hose.



- 12** As the grout overflows from the upper grouting holes of the couplers, close the hole using the hose cap.



- 13** Continue pumping until the grout overflows from the opposite side grouting hose. Then, close the grouting hose holes using a hose caps.



- 14** The braces may be removed 3 days after the completion of grouting.

Contact Leviat locally

For more information on the products featured here, please contact Leviat:

Malaysia

Leviat

Block B, 608B, 3rd Floor,
Jalan Lagoon Selatan,
Bandar Sunway,
47500, Subang Jaya, Selangor
Tel: +603 - 5879 8182
Email: info.my@leviat.com

Singapore

Leviat

10 Benoi Sector
Singapore 629845
Tel: +65 - 6266 6802
Email: info.sg@leviat.com

India

Leviat

Unit S4, 902, A Wing
Lodha iThink Campus Building
Panchpakhandi, Pokharan Road 2
Thane 400608
Tel: +91 - 22 6953 3700
Email: info.in@leviat.com

Philippines

Leviat

27F Office A, Podium West Tower
12 ADB Avenue, Ortigas Center,
Mandaluyong City,
1550 Philippines
Tel: +632 - 7957 6381
Email: info.ph@leviat.com

Contact our trusted distributors

We closely collaborate with our distributors to meet all your needs across Asia.

Hong Kong

MDM Group Inc. Ltd
Unit 209A, 2/F, Photonics Centre
No 2 Science Park East Avenue
Hong Kong Science Park, Shatin N.T.
Tel: +852 3955 0891
Email: info@mdmg.hk

South Korea

New Korea Trading Co. Ltd
6F, 22 Seounro 6gil, Seocho-gu
Seoul, 06734
Tel: +82 2 582 2714-6
Email: nkt@chin.co.kr

Thailand

Cons Inno Co. Ltd
88 Moo 4 Bangsithong Bangkruay
Nonthaburi 11130
Tel: +66 92 786 6464
Email: info@consinno.com

Philippines

E.C Daughson Inc.
100 Congressional Avenue
Project 8, Quezon City, 1106
Tel: +63 2 8426 0888
Email: info@ecdaughson.com

Sri Lanka

Amtek Engineering (Pvt) Ltd
28 Sulaiman Terrace, Colombo 5
Tel: +94 77 742 0709
Email: info@amtek.lk

Vietnam

NDS Engineering and Trading JSC
793/49/1 Tran Xuan Soan Street
Tan Hung Ward, Dist 7
Ho Chi Minh City
Tel: +84 28 3 620 0659
Email: info@ndsec.vn

Taiwan

Hsiang Sung Co. Ltd
5F-2, No 380, Minguan 2 Road
Qianzhen District
Kaoshiung City 806
Tel: +886 07 226 4115
Email: winston@hsiangsung.com.tw

Contact Leviat worldwide

For more information on the products featured here, please contact leviat:

Australia

98 Kurrajong Avenue,
Mount Druitt, Sydney, NSW 2770
Tel: +61 - 2 8808 3100
Email: info.au@leviat.com

Austria

Leonard-Bernstein-Str. 10
Saturn Tower, 1220 Wien
Tel: +43 - 1 - 259 6770
Email: info.at@leviat.com

Belgium

Industrielaan 2
1740 Ternat
Tel: +32 - 2 - 582 29 45
Email: info.be@leviat.com

China

Room 601 Tower D,
Vantone Centre
No. A6 Chao Yang Men Wai Street
Chaoyang District
Beijing P.R. China 100020
Tel: +86 - 10 5907 3200
Email: info.cn@leviat.com

Czech Republic

Business Center Šafránková
Šafránková 1238/1
155 00 Praha 5
Tel: +420 - 311 - 690 060
Email: info.cz@leviat.com

Finland

Vädursgatan 5
412 50 Göteborg / Sweden
Tel: +358 (0)10 6338781
Email: info.fi@leviat.com

France

6, Rue de Cabanis
FR 31240 L'Union
Toulouse
Tel: +33 - 5 - 34 25 54 82
Email: info.fr@leviat.com

Germany

Liebigstrasse 14
40764 Langenfeld
Tel: +49 - 2173 - 970 - 0
Email: info.de@leviat.com

India

Unit S4, 902, A Wing
Lodha iThink Campus Building
Panchpakhandi, Pokharan Road 2
Thane 400608
Tel: +91 - 22 6953 3700
Email: info.in@leviat.com

Italy

Via F.lli Bronzetti 28
24124 Bergamo
Tel: +39 - 035 - 0760711
Email: info.it@leviat.com

Malaysia

Block B, 608B, 3rd Floor,
Jalan Lagoon Selatan,
Bandar Sunway,
47500, Subang Jaya, Selangor
Tel: +603 - 5879 8182
Email: info.my@leviat.com

Netherlands

Oostermaat 3
7623 CS Borne
Tel: +31 - 74 - 267 14 49
Email: info.nl@leviat.com

New Zealand

2/19 Nuttall Drive, Hillsborough,
Christchurch 8022
Tel: +64 - 3 376 5205
Email: info.nz@leviat.com

Norway

Vestre Svanholmen 5
4313 Sandnes
Tel: +47 - 51 82 34 00
Email: info.no@leviat.com

Philippines

27F Office A, Podium West Tower
12 ADB Avenue, Ortigas Center,
Mandaluyong City,
1550 Philippines
Tel: +632 - 7957 6381
Email: info.ph@leviat.com

Poland

Ul. Obornicka 287
60-691 Poznań
Tel: +48 - 61 - 622 14 14
Email: info.pl@leviat.com

Singapore

10 Benoi Sector
Singapore 629845
Tel: +65 - 6266 6802
Email: info.sg@leviat.com

Spain

Polígono Industrial Santa Ana
c/ Ignacio Zuloaga, 20
28522 Rivas-Vaciamadrid
Tel: +34 - 91 632 18 40
Email: info.es@leviat.com

Sweden

Vädursgatan 5
412 50 Göteborg
Tel: +46 - 31 - 98 58 00
Email: info.se@leviat.com

Switzerland

Grenzstrasse 24
3250 Lyss
Tel: +41 (0) 800 22 66 00
Email: info.ch@leviat.com

United Arab Emirates

RA08 TB02, PO Box 17225
JAFZA, Jebel Ali, Dubai
Tel: +971 (0)4 883 4346
Email: info.ae@leviat.com

United Kingdom

President Way,
President Park,
Sheffield S4 7UR
Tel: +44 - 114 275 5224
Email: info.uk@leviat.com

USA / Canada

6467 S Falkenburg Road
Riverview, FL 33578
Tel: (800) 423-9140
Email: info.us@leviat.us

For countries not listed

Email: info@leviat.com

Notes regarding this document

© Protected by copyright. The information in this publication is based on state-of-the-art technology at the time of publication. In every case, project working details should be entrusted to appropriately qualified and experienced persons. Leviat shall not accept liability for the accuracy of the information in this document or for any printing errors. We reserve the right to make technical and design changes at any time. With a policy of continuous product development, Leviat reserves the right to modify product design and specification at any time.



Leviat[®]

Imagine. Model. Make.

Leviat.com



© May 2026