



# **Ancon®**

## **Unilift Lifting Systems**

for the Precast Concrete Industry



# **We are one team.** **We are Leviat.**

Leviat is the new name of  
CRH's construction accessories  
companies worldwide.

Under the Leviat brand, we have united the expertise, skills and resources of Ancon and its sister companies to create a world leader in fixing, connecting and anchoring technology.

The products you know and trust will remain an integral part of Leviat's comprehensive brand and product portfolio. As Leviat, we can offer you an extended range of specialist products and services, greater technical expertise, a larger and more agile supply chain and better, faster innovation.

By bringing together CRH's construction accessories family as one global organisation, we are better equipped to meet the needs of our customers, and the demands of construction projects, of any scale, anywhere in the world.

This is an exciting change. Join us on our journey.

Read more about Leviat at [Leviat.com](https://www.leviat.com)



Our product brands include:

**Ancon®**

  
**HALFEN**

**MOMENT**



**60**

locations

sales in  
**30+**  
countries

**3000**

people worldwide

Imagine. Model. Make.

[Leviat.com](https://Leviat.com)

# Ancon Unilift Lifting Systems

## Ancon Unilift Systems

Ancon Unilift is the ideal lifting and handling system for a wide variety of precast concrete products, particularly in civil engineering applications. The system is typically used for lifting panels, pipes, pits, manholes, road barriers, bridge beams, planks, sound walls, culverts etc.

The Ancon Unilift Lifting System consists of a range of lifting anchors, clutches and recess formers used for the safe, fast and efficient handling of a wide range of precast concrete items during manufacture, transport and installation. Unilift components are available in 6 load classes with working loads reaching from 1.3t - 32t.

Ancon Unilift CA Cone Anchors and Unilift RA Reo Anchors are forged headed anchors that are cast into the concrete. Recess formers create a spherical recess around the anchor head. Ancon Unilift LK Locking Klaw engage with the anchor head and transfer the lifting loads safely into the anchor. Unilift components of different load groups are not interchangeable for maximum safety.

### Locking Klaw

*Safety clutch which locks to the anchor head*

### Anchor

*Forged anchor set below the concrete surface*

### Recess

*Formed in the concrete by a recess former to permit attachment of the Locking Klaw to the anchor head.*



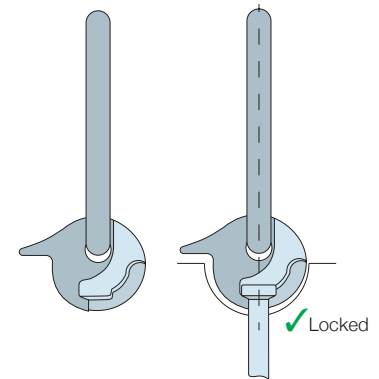
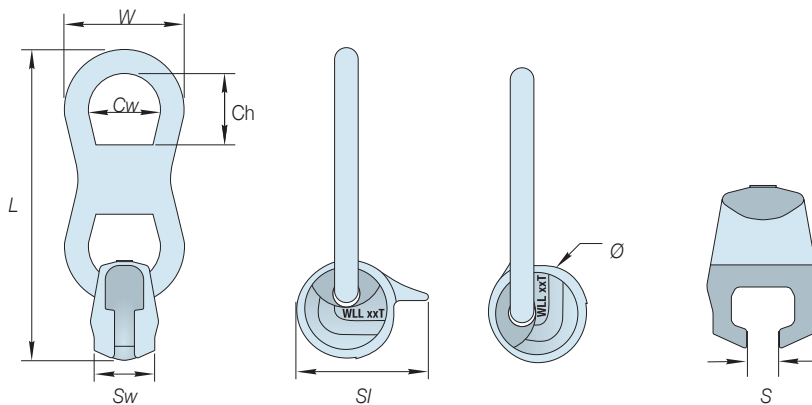
- ✓ Locking Klaw can be connected with the tail towards the load and the tail away from the load preventing unsafe situations caused by mis-engagement.
- ✓ Standard load classes of 1.3, 2.5, 5, 7.5, 10, 20 and 32 tonnes available.
- ✓ Fast, efficient handling of products in the factory, during transport and on the job-site.
- ✓ Unique, patented design of the Ancon Unilift Locking Klaw prevents disconnection between clutch and anchor.
- ✓ Easy to train operators how to use the system with minimal supervision.
- ✓ Components of different load groups are not interchangeable for maximum safety.
- ✓ Ancon Unilift Locking Klaw and Anchors meet or exceed international standards and requirements for lifting components.



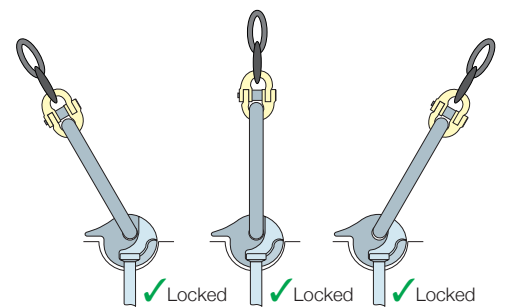
## Ancon Unilift Locking Klaw

These strong, safe, lightweight clutches suit all spherical head lifting anchors. They protect against dangerous disconnection where there is a risk of fouling, which is a common problem when lowering precast drainage products into confined spaces like trenches. They also help to safely rotate civil prefabricated concrete units.

The Working Load Limit (Load Class) of Unilift Locking Klaw is based on a factor of safety of 5.0.



Locking Well interlocks with the Anchor Head



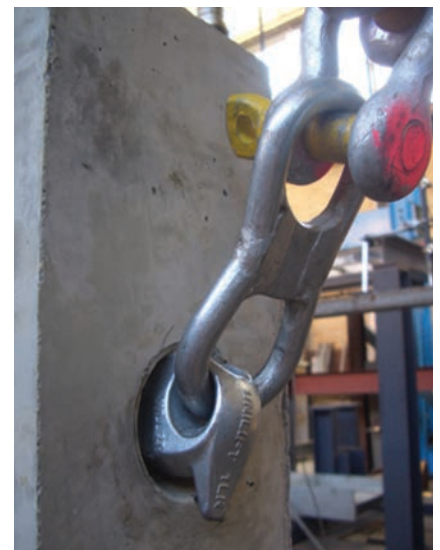
Unique design ensures safe engagement for all load directions

### Working Load Limits

WLL	Annual Proof Load kN	Nominal WLL Anchor	Part Code
2.0	24	1.3	01LK
3.0	36	2.5	02LK
5.0	60	5	05LK
10.0	120	10	10LK
20.0	240	20	20LK
32.0	384	32	32LK

### Part Codes and Nominal Dimensions

Part Code	Dimensions (mm)							S
	L	W	Ch	Cw	Sw	Sl	Ø	
01LK	170	66	44	40	33	72	56	11
02LK	215	85	59	52	42	88	68	16
05LK	270	110	62	70	57	113	88	22
10LK	365	145	83	90	73	144	112	31
20LK	515	210	103	130	110	195	152	43
32LK	680	272	189	172	160	300	180	52



A 5 tonne remote release Locking Klaw is also available which is ideal for tilt-up construction.

### Product Description

5 Tonne Remote Release

### Part Code

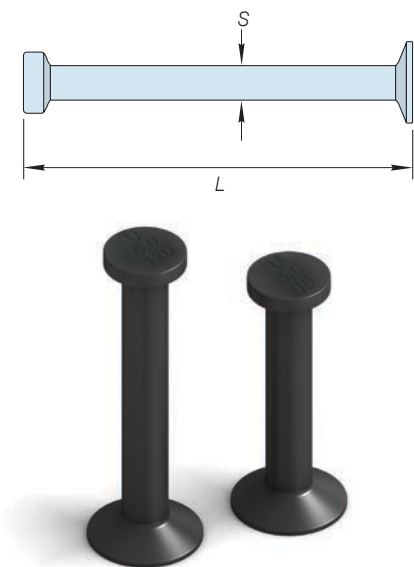
05LKRR

# Ancon Unilift Lifting Systems

## Cone Anchors

This classic spherical-headed, forged foot anchors are the first choice for most applications. They are manufactured from mill-finished, forged, high impact strength construction steel. Genuine Unilift anchors are stamped with a 'U' on the head, as well as load class and length.

The Working Load Limit (Load Class) of Ancon Unilift CA Cone Anchors is based on a factor of safety of 3.0. Concrete capacity generally governs the design and must be checked in accordance with the applicable codes. Contact Leviat for further assistance.



## Part Codes, Dimensions and Pack Size

Load Class (Tonnes)	Dimensions (mm)		LK Locking Klaw	Part Code	Quantity per Bag
	L	S			
1.3	35	10	01LK	CA01035 MF	200
	40	10	01LK	CA01040 MF	200
	45	10	01LK	CA01045 MF	200
	50	10	01LK	CA01050 MF	200
	55	10	01LK	CA01055 MF	200
	65	10	01LK	CA01065 MF	200
	85	10	01LK	CA01085 MF	100
	120	10	01LK	CA01120 MF	100
	240	10	01LK	CA01240 MF	50
	55	14	02LK	CA02055 MF	100
2.5	70	14	02LK	CA02070 MF	100
	75	14	02LK	CA02075 MF	100
	85	14	02LK	CA02085 MF	50
	90	14	02LK	CA02090 MF	50
	120	14	02LK	CA02120 MF	50
	170	14	02LK	CA02170 MF	25
	210	14	02LK	CA02210 MF	25
	280	14	02LK	CA02280 MF	25
	75	20	05LK	CA05075 MF	50
	95	20	05LK	CA05095 MF	50
5.0	120	20	05LK	CA05120 MF	25
	150	20	05LK	CA05150 MF	25
	170	20	05LK	CA05170 MF	25
	240	20	05LK	CA05240 MF	20
	340	20	05LK	CA05340 MF	10
	95	24	10LK	CA07095 MF	50
7.5	120	24	10LK	CA07120 MF	25
	140	24	10LK	CA07140 MF	25
	165	24	10LK	CA07165 MF	25
	300	24	10LK	CA07300 MF	10
	540	24	10LK	CA07540 MF	5
10.0	120	28	10LK	CA10120 MF	10
	135	28	10LK	CA10135 MF	10
	150	28	10LK	CA10150 MF	10
	170	28	10LK	CA10170 MF	10
	200	28	10LK	CA10200 MF	10
	340	28	10LK	CA10340 MF	5
	680	28	10LK	CA10680 MF	5
	200	39	20LK	CA20200 MF	1
20.0	340	39	20LK	CA20340 MF	1
	500	39	20LK	CA20500 MF	1
32.0	500	50	32LK	CA32500 MF	1
	700	50	32LK	CA32700 MF	1

Anchors are supplied with mild steel finish as standard.  
Other sizes and material finishes available on request.

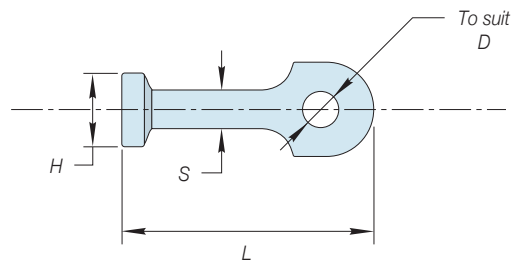
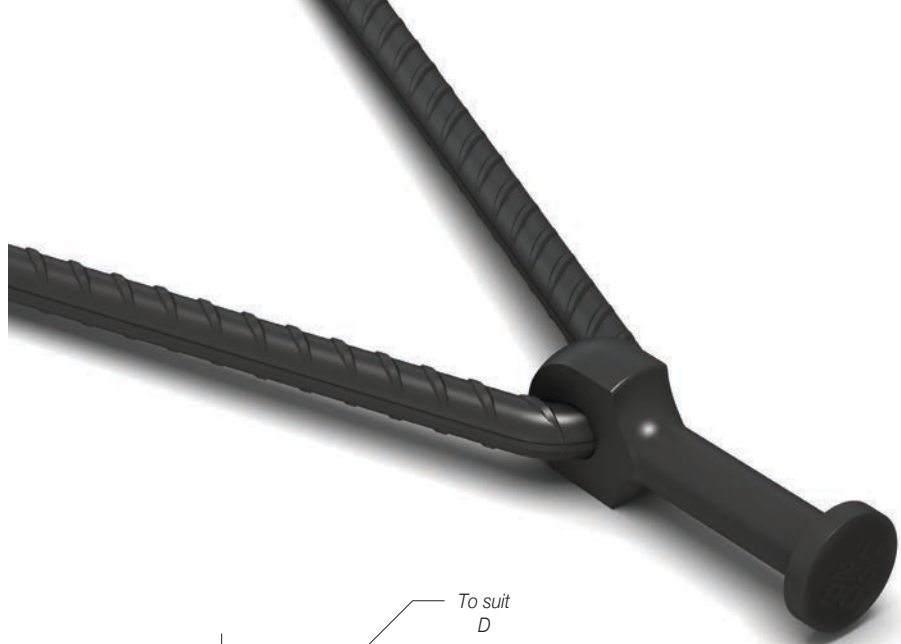
## Ancon Unilift RA Reo (Eye) Anchors

Ancon Unilift RA Reo Anchors are used with a hanger bar, also known as a tension bar, where the concrete is too weak for a cone anchor. They are ideal for thin panels and other applications where the concrete cone developed by traditional foot anchors is insufficient to provide the working load limit of the anchor.

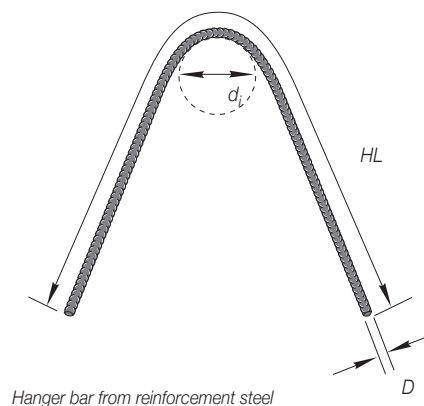
The bar is threaded through the hole in the anchor and embedded deep in the concrete. Like Ancon Unilift CA Cone Anchors they are manufactured from mill-finished, forged, high impact strength construction steel, and are stamped with a Unilift 'U', the load class and length.

The Working Load Limit (Load Class) of Ancon Unilift RA Reo Anchors is based on a factor of safety of 3.0. Concrete capacity generally governs the design for shear loads and must be checked in accordance with the applicable codes. Contact Leviat for further assistance.

The cut lengths for the hanger bar given in the table are suitable for C16/20 grade concrete and calculated based on a FoS of 2.25.



Load Class (Tonnes)	Dimensions (mm)				Bending Diameter d <sub>i</sub>	Part Code	Quantity per Bag
	L	S	D	HL			
1.3	50	10	R8	700	32	RA01050	200
	65	10	R8	700	32	RA01065	200
2.5	65	14	H10	870	40	RA02065	100
	90	14	H10	870	40	RA02090	100
	120	14	H10	870	40	RA02120	100
5.0	120	20	H16	1180	64	RA05120	25
10.0	180	28	H20	2020	140	RA10180	10
20.0	250	39	H32	2600	224	RA20250	1
32.0	300	50	H40	3560	280	RA32300	1



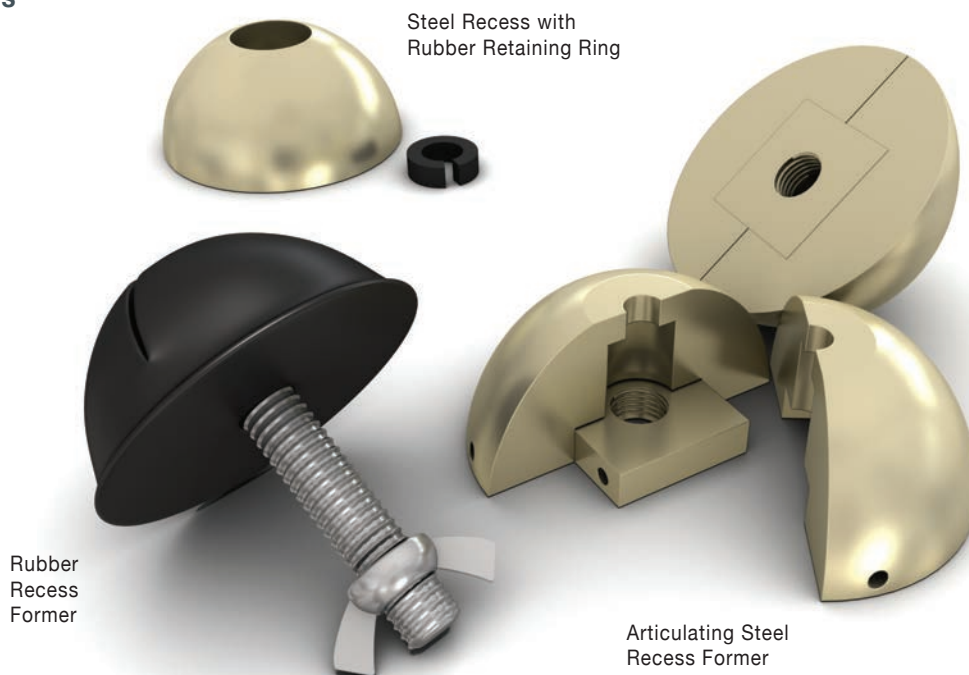
# Ancon Unilift Lifting Systems

## Ancon Unilift Recess Formers

These products are used to accurately and reliably set the anchor into its recess in the concrete panel. Recess formers are non-interchangeable between load groups to minimise errors and are available in a variety of types to meet the demands of different applications.



Narrow Recess Former



Steel Recess with Rubber Retaining Ring

Rubber Recess Former

Articulating Steel Recess Former

### Rubber Recess Former

Our most economical recess former, used for a wide variety of applications. Made from a hard, yet flexible, oil resistant rubber, they are ideal for attachment to steel and timber forms as well as floats for top surface installation. Supplied complete with attachment bolt and wing nut.

Unilift / Anchor WLL (Tonne)	Diameter (mm)	Part Code
1.3	66	RRF01
2.5	80	RRF02
5.0	100	RRF05
7.5	125	RRF07
10.0	128	RRF10
20.0	170	RRF20
32.0	236	RRF32

### Narrow Recess Former

Narrow Recess Formers are used to form the recess in thin wall panels. Durable and resistant against oil, they are used when the load is only in one direction.

Unilift / Anchor WLL (Tonne)	Length (mm)	Width (mm)	Part Code
1.3	60	42	NRF01
2.5	77	52	NRF02
5.0	95	69	NRF05
7.5	118	85	NRF07
10.0	118	85	NRF10

### Steel Recess with Rubber Retaining Ring

Featuring a replaceable rubber retaining ring, these steel recess formers offer a long service life and are an economical alternative to rubber recesses for production precasting.

Unilift / Anchor WLL (Tonne)	Diameter (mm)	Recess Part Code	Ring Part Code
1.3	60	SRF01	RR01
2.5	74	SRF02	RR02
5.0	94	SRF05	RR05
10.0	130	SRF10	RR10

### Articulated Steel Recess Former

These products are similar in action to the semi-spherical rubber recess, but are manufactured from steel, offering a long service life for production precasting.

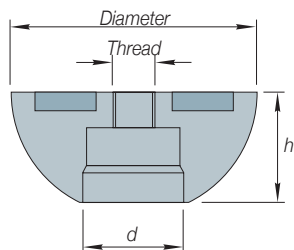
Unilift / Anchor WLL (Tonne)	Diameter (mm)	Part Code
1.3	60	SRF01A
2.5	74	SRF02A
5.0	94	SRF05A
10.0	130	SRF10A



## Complementary Leviat Products and Systems

### HALFEN Magnetic Recess Formers

These magnetic recess formers are used in metal formwork when drilling is not an option.



Unilift / Anchor WLL (Tonne)	Part Code	Diameter (mm)	h (mm)	Thread	d (mm)
1.3	SRFM01	60	27.5	M8	20.5
2.5	SRFM02	74	33	M12	30
5.0	SRFM05	94	42	M12	38
10.0	SRFM10	118	53	M12	48



Halfen Magnetic Recess Formers

### HALFEN FRIMEDA Lifting Anchor System with Remote Release Clutch

The HALFEN FRIMEDA Transport anchor is a high quality and cost effective system for transporting all types of concrete elements. The tilt-up anchor allows lifting horizontally-cast wall elements upright when not using a tilting table. A remote release is also available; this increases efficiency and safety when lifting tall elements.

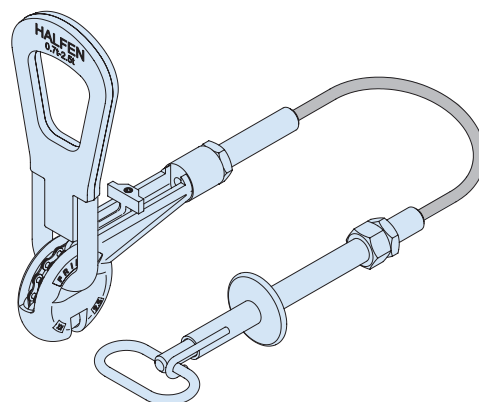


#### Operating principle

The remote-control is used to open the ring clutch from a safe distance of up to 10 metres. A Bowden cable connected to the locking bolt at the ring clutch serves as a release mechanism. At the opposite end, the release handle is secured to the tube with a safety catch. All TPA-F2 Clutch heads in the various load groups have the same M27 thread, i.e. the remote-control mechanism fits any clutch head. The opening and closing mechanism, comprising of the locking bolt, the shackle with indicator and the latch are parts of the clutch head.

#### Operation of the manual remote-control

To release the ring clutch, disengage the handle by pressing and turning. Unintentional release is not possible. For safety and efficiency reasons, the locking bolt is closed by hand. The remote device is designed so the locking bolt cannot be closed remotely. The flexible tube can withstand reasonable tension and compression loads, so that the precast unit is easily handled. The ring clutches of all the load groups can be used with any of the manual remote-control releases of 2.5m, 5.0m, 7.5m and 10.0m lengths.



## Worldwide contacts for Leviat:

### Australia

**Leviat**  
98 Kurrajong Avenue,  
Mount Druitt Sydney, NSW 2770  
Tel: +61 - 2 8808 3100  
Email: info.au@leviat.com

### Austria

**Leviat**  
Leonard-Bernstein-Str. 10  
Saturn Tower, 1220 Wien  
Tel: +43 - 1 - 259 6770  
Email: info.at@leviat.com

### Belgium

**Leviat**  
Industrielaan 2  
1740 Ternat  
Tel: +32 - 2 - 582 29 45  
Email: info.be@leviat.com

### China

**Leviat**  
Room 601 Tower D, Vantone Centre  
No. A6 Chao Yang Men Wai Street  
Chaoyang District  
Beijing · P.R. China 100020  
Tel: +86 - 10 5907 3200  
Email: info.cn@leviat.com

### Czech Republic

**Leviat**  
Business Center Šafránková  
Šafránková 1238/1  
155 00 Praha 5  
Tel: +420 - 311 - 690 060  
Email: info.cz@leviat.com

### Finland

**Leviat**  
Vädursgatan 5  
412 50 Göteborg / Sweden  
Tel: +358 (0)10 6338781  
Email: info.fi@leviat.com

### France

**Leviat**  
6, Rue de Cabanis  
FR 31240 L'Union  
Toulouse  
Tel: +33 - 5 - 34 25 54 82  
Email: info.fr@leviat.com

### Germany

**Leviat**  
Liebigstrasse 14  
40764 Langenfeld  
Tel: +49 - 2173 - 970 - 0  
Email: info.de@leviat.com

### India

**Leviat**  
309, 3rd Floor, Orion Business Park  
Ghodbunder Road, Kapurbawdi,  
Thane West, Thane,  
Maharashtra 400607  
Tel: +91 - 22 2589 2032  
Email: info.in@leviat.com

### Italy

**Leviat**  
Via F.lli Bronzetti 28  
24124 Bergamo  
Tel: +39 - 035 - 0760711  
Email: info.it@leviat.com

### Malaysia

**Leviat**  
28 Jalan Anggerik Mokara 31/59  
Kota Kemuning, 40460 Shah Alam  
Selangor  
Tel: +603 - 5122 4182  
Email: info.my@leviat.com

### Netherlands

**Leviat**  
Oostermaat 3  
7623 CS Borne  
Tel: +31 - 74 - 267 14 49  
Email: info.nl@leviat.com

### New Zealand

**Leviat**  
2/19 Nuttall Drive, Hillsborough,  
Christchurch 8022  
Tel: +64 - 3 376 5205  
Email: info.nz@leviat.com

### Norway

**Leviat**  
Vestre Svanholmen 5  
4313 Sandnes  
Tel: +47 - 51 82 34 00  
Email: info.no@leviat.com

### Philippines

**Leviat**  
27F Office A, Podium West Tower,  
12 ADB Avenue, Ortigas Center,  
Mandaluyong City,  
1550 Philippines  
Tel: +63 - 2 7957 6381  
Email: info.ph@leviat.com

### Poland

**Leviat**  
Ul. Obornicka 287  
60-691 Poznań  
Tel: +48 - 61 - 622 14 14  
Email: info.pl@leviat.com

### Singapore

**Leviat**  
14 Benoi Crescent  
Singapore 629977  
Tel: +65 - 6266 6802  
Email: info.sg@leviat.com

### Spain

**Leviat**  
Polígono Industrial Santa Ana  
c/ Ignacio Zuloaga, 20  
28522 Rivas-Vaciamadrid  
Tel: +34 - 91 632 18 40  
Email: info.es@leviat.com

### Sweden

**Leviat**  
Vädursgatan 5  
412 50 Göteborg  
Tel: +46 - 31 - 98 58 00  
Email: info.se@leviat.com

### Switzerland

**Leviat**  
Grenzstrasse 24  
3250 Lyss  
Tel: +41 - 31 750 3030  
Email: info.ch@leviat.com

### United Arab Emirates

**Leviat**  
RA08 TB02, PO Box 17225  
JAFZA, Jebel Ali, Dubai  
Tel: +971 (0)4 883 4346  
Email: info.ae@leviat.com

### United Kingdom

**Leviat**  
President Way, President Park,  
Sheffield, S4 7UR  
Tel: +44 - 114 275 5224  
Email: info.uk@leviat.com

### United States of America

**Leviat**  
6467 S Falkenburg Rd.  
Riverview, FL 33578  
Tel: (800) 423-9140  
Email: info.us@leviat.us

### For countries not listed

Email: info@leviat.com

**Leviat.com**

#### Notes regarding this catalogue

© Protected by copyright. The construction applications and details provided in this publication are indicative only. In every case, project working details should be entrusted to appropriately qualified and experienced persons. Whilst every care has been exercised in the preparation of this publication to ensure that any advice, recommendations or information is accurate, no liability or responsibility of any kind is accepted by Leviat for inaccuracies or printing errors. Technical and design changes are reserved. With a policy of continuous product development, Leviat reserves the right to modify product design and specification at any time.

**For more information on the following products, please contact:**

**Malaysia**

**Leviat**

28, Jalan Anggerik Mokara 31/59,  
Kota Kemuning, 40460 Shah Alam,  
Selangor

Tel: +603 - 5122 4182

Email: [info.my@leviat.com](mailto:info.my@leviat.com)

**Singapore**

**Leviat**

14 Benoi Crescent,  
Singapore 629977

Tel: +65 - 6266 6802

Email: [info.sg@leviat.com](mailto:info.sg@leviat.com)

**India**

**Leviat**

309, 3rd Floor, Orion Business Park,  
Ghodbunder Road, Kapurbawdi,  
Thane West, Thane,  
Maharashtra 400607

Tel: +91 - 22 2589 2032

Email: [info.in@leviat.com](mailto:info.in@leviat.com)

**Philippines**

**Leviat**

27F Office A, Podium West Tower,  
12 ADB Avenue, Ortigas Center,  
Mandaluyong City,  
1550 Philippines

Tel: +63 - 2 7957 6381

Email: [info.ph@leviat.com](mailto:info.ph@leviat.com)

**Leviat.com**

---



**Imagine. Model. Make.**

**[Leviat.com](https://Leviat.com)**