

Invisible Connections

Greater than 80% Reduction in Labour!

Introduction

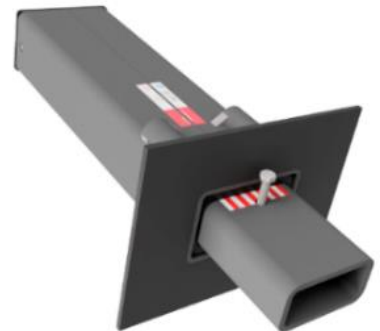
TSS - Precast Landing-To-Core Wall Connection

BSF - Precast Beam-To-Column Connection

DTS - Precast T-Slab-To-Beam Connection

Key Benefit for TSS

- Now, even staircase landing can be precast
- No more drilling of dowel bar
- Save on scaffold cost
- Save on formwork cost
- Fast and productive
- ETA approved



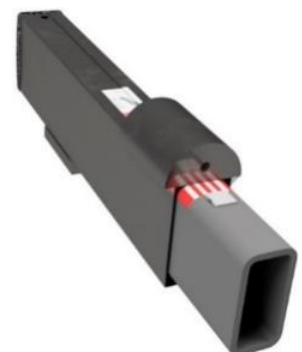
Key Benefit for BSF

- Fast and productive
- With no/less scaffold, free up space for access
- Save on scaffold cost
- Save on formwork cost
- ETA approved

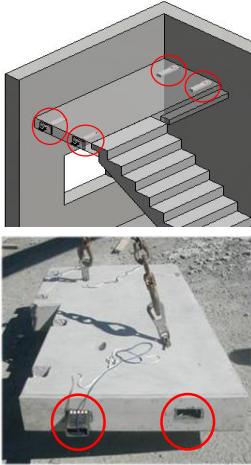


Key Benefit for DTS

- Fast and productive
- New and innovative solution of installing Precast T-Slab
- With no/less scaffold, free up space for access
- Save on scaffold cost
- Save on formwork cost
- ETA approved



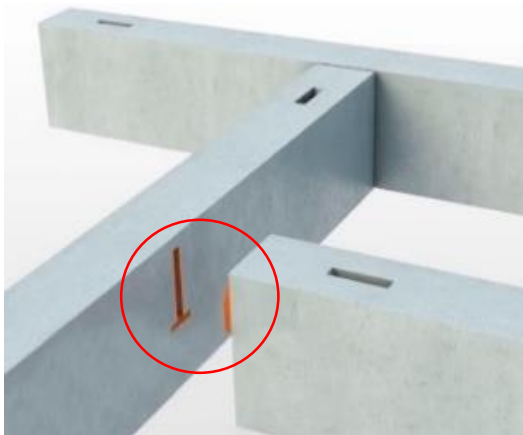
Application



Precast Staircase Landing with TSS



Precast Beam with BSF during erection



Precast Beam to Precast Beam Connection with BSF



Precast T-Slab Installed with DTS for Multi-Storey Carpark

For more information on these products, please contact:

Malaysia

Leviat

28 Jalan Anggerik Mokara 31/59, Kota Kemuning, Seksyen 31, 40460
Shah Alam, Selangor, Malaysia
Tel: +603 5122 4182
Email: info.my@leviat.com

Singapore

Leviat

14 Benoi Crescent, Singapore 629977
Tel: +65 6266 6802
Email: info.sg@leviat.com

India

Leviat

309, 3rd Floor, Orion Business Park, Ghodbunder Road, Kapurbawdi
Thane West, Thane, Maharashtra 400607, India
Tel: +91 22258 92032
Email: info.in@leviat.com

Philippines

Leviat

U-2933 Regus, Joy Nostalg Centre, #17 ADB Avenue, Ortigas Center
Pasig City 1605, Philippines
Tel: +632 7957 6381
Email: info.ph@leviat.com

Leviat.com

Moment-solutions.com

Notes regarding this flyer

The construction applications and details provided in this publication are indicative only. In every case, project working details should be entrusted to appropriately qualified and experienced persons. Whilst every care has been exercised in the preparation of this publication to ensure that any advice, recommendations or information is accurate, no liability or responsibility of any kind is accepted by Leviat for inaccuracies or printing errors. Technical and design changes are reserved. With a policy of continuous product development, Leviat reserves the right to modify product design and specification at any time.