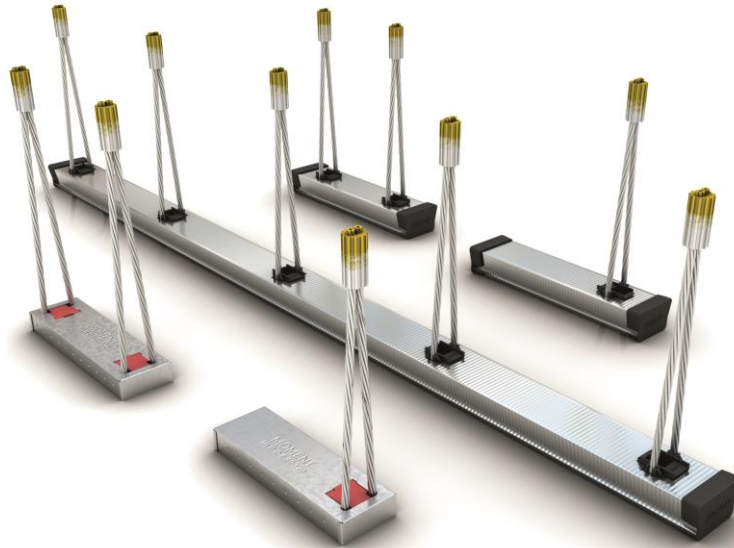


## MOMENT Loop Box Installation Instruction

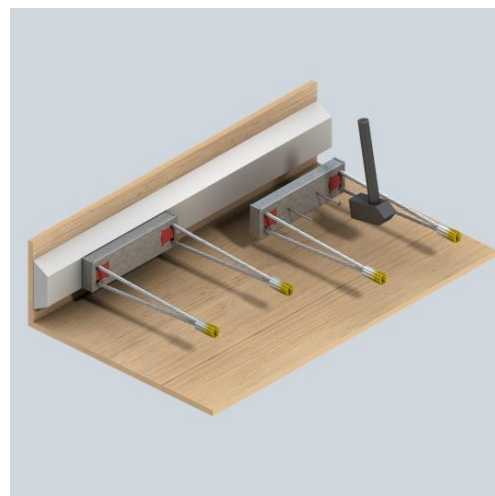


### Procedure – In Precast Factory

1. The MOMENT Loop Box Single or Double (MLB-S/D) must first be positioned and secured, one by one to the batten on the formwork, using either hot glue or nail (Figure 1, Figure 2). Ensure zero gap between MLB and batten.

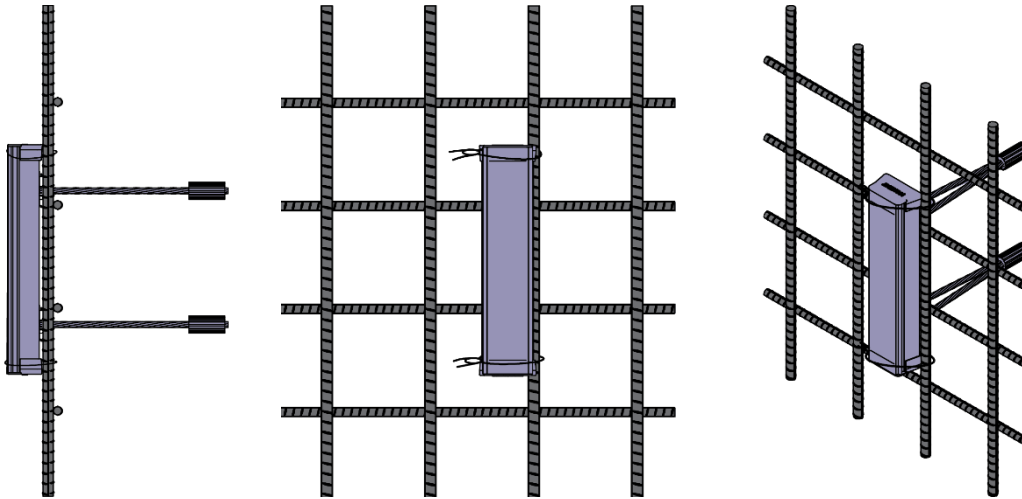


*Figure 1: Securing Wood Batten onto Formwork.*

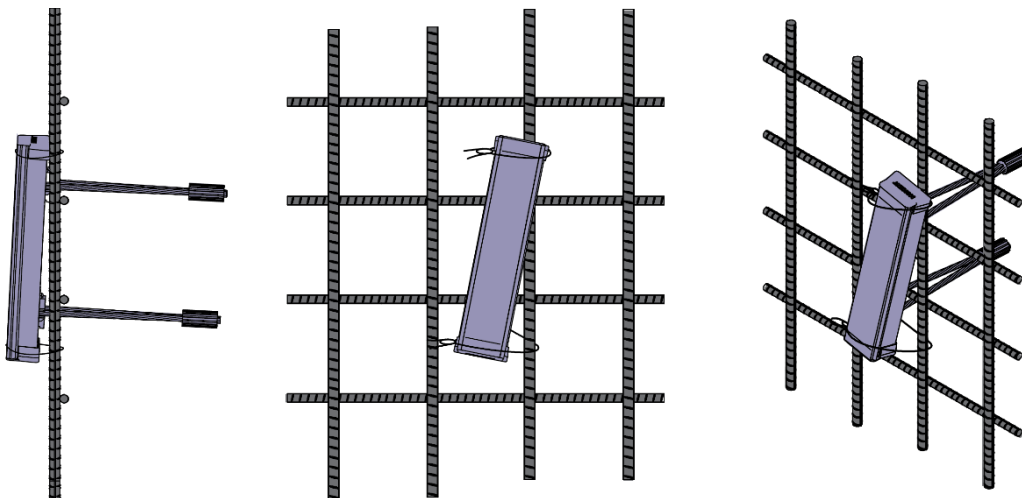


*Figure 2: Securing Double Loop Box onto Batten.*

2. Alternatively, the MLB can be secured to reinforcement, using GI wire. At least 2 locations must be secured, top and bottom. See Figure 3.



*Figure 3: Securing MLB Using GI Wire (Correct).*



*Figure 4: Securing MLB Using GI Wire (Incorrect).*

3. For MOMENT Multi Loop Box (MLB-M), installation is to be done similar to MLB-S/D. However, only need to position and secure the box one time, as shown in Figure 5.

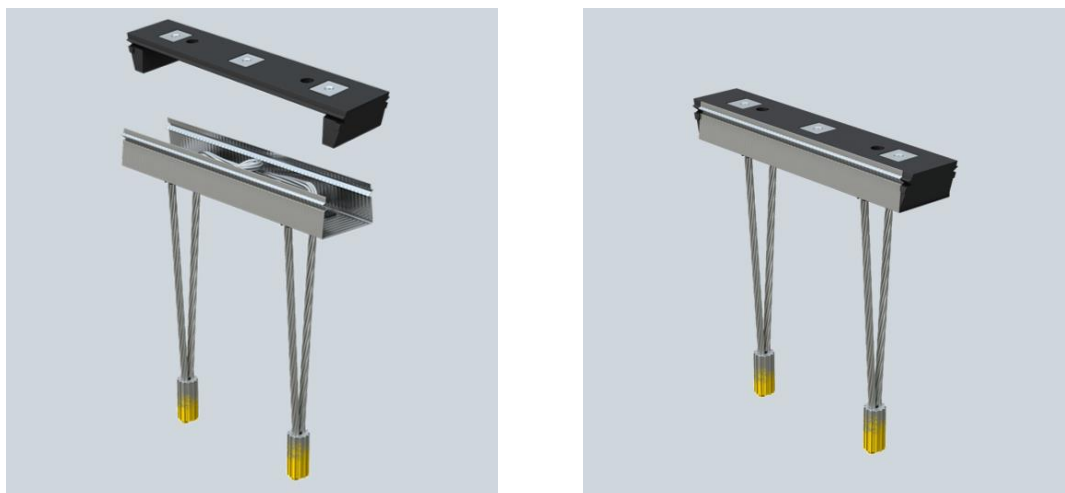


*Figure 5: Securing MLB-M onto Batten.*

4. The ferrule end of the wire rope must also be positioned perpendicular to the MLB and secured.
5. Install the required wall reinforcement.
6. Then, concrete pour can commence

### Procedure – In Precast Factory using Magnetic Back Cover

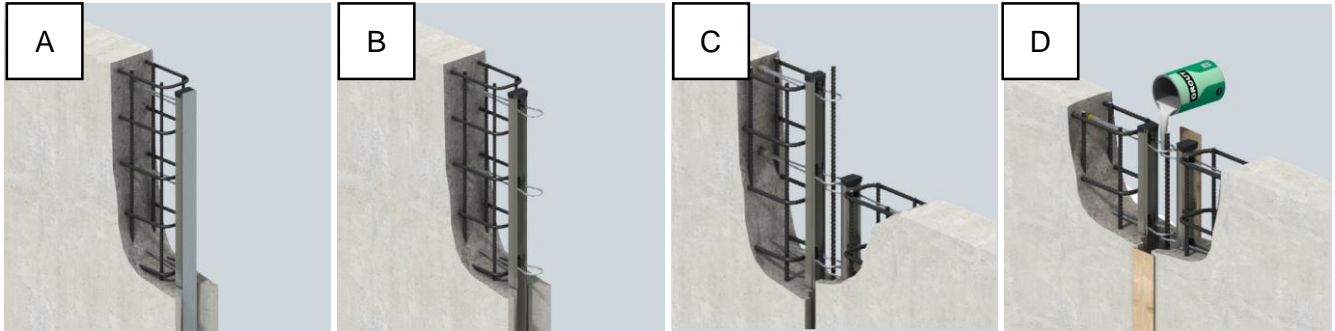
1. First the MLB end caps and back cloth tape needs to be removed.
2. For MLB-S/D, the Magnetic Back Cover can then be snap-fitted directly onto the MLB, as shown in Figure 6.



*Figure 6: Magnetic Back Cover Installation for MLB-S/D.*

3. For MLB-M, there could be two or more Magnetic Back Cover being used. A suitable length duct tape should be used in between, to cover any gaps. The quantity of Magnetic Back Cover required, as well as spacing between each, should be advised by Leviat technical team.
4. Some mould release or oil should be applied onto the rubber surfaces, to ease removal after casting.
5. Once the Magnetic Back Cover is secured, the MLB can be attached directly to the steel formwork.
6. The ferrule end of the wire rope must also be positioned perpendicular to the MLB and secured.
7. Install the required wall reinforcement.
8. Then, concrete pour can commence.
9. Once concrete cured, lightly tap away at Magnetic Back Cover locations.
10. Then using a screwdriver or other tools, remove the Magnetic Back Cover by inserting the tool into the hole on the rubber and gently pulling out.
11. Inspect the Magnetic Back Cove for any damage. Clean the surfaces of any concrete debris.
12. The Magnetic Back Cover can now be reused

Procedure – At Construction Site

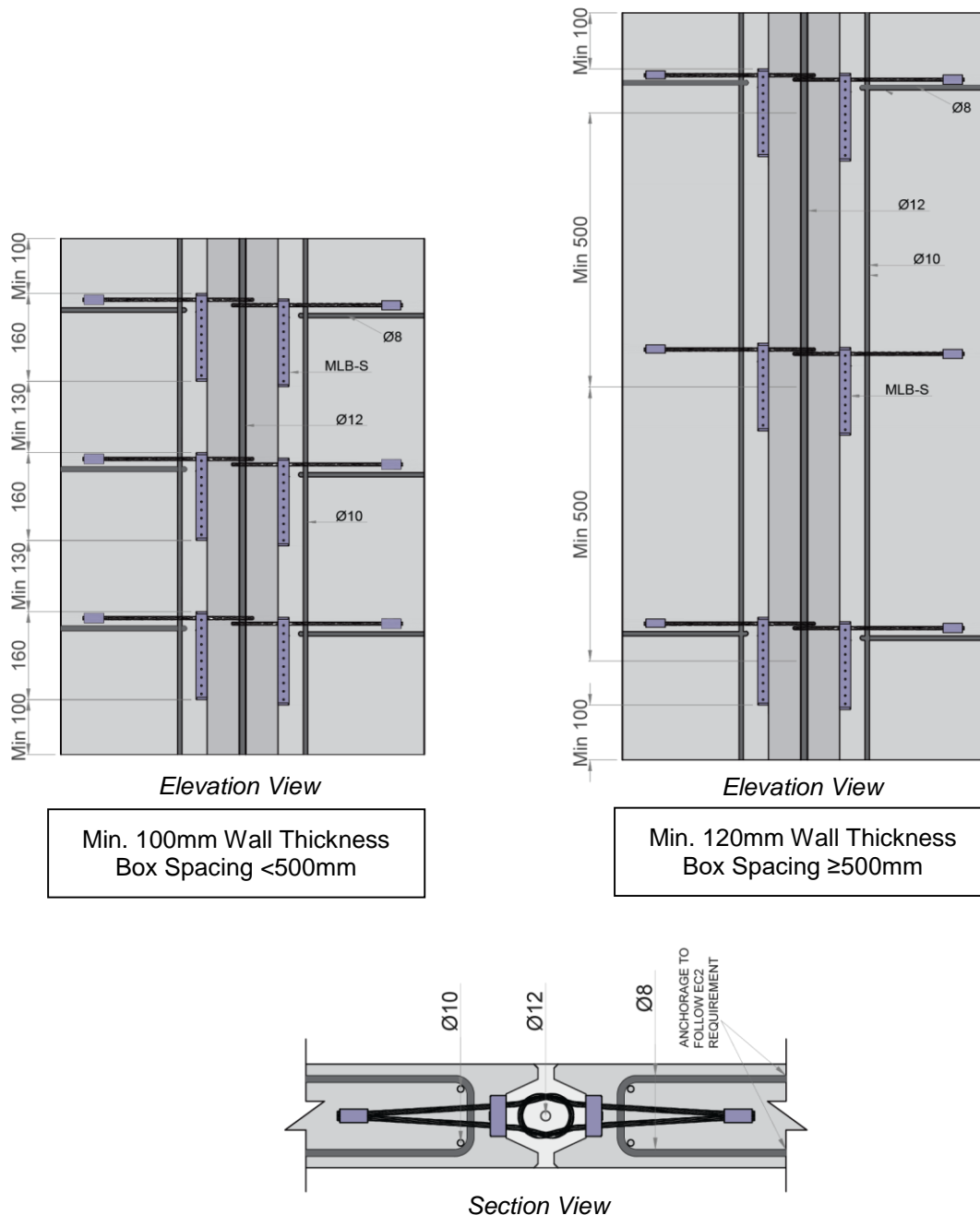


*Figure 7: Procedure for Site Installation.*

1. First, the back cloth cover is removed, and wire ropes unfolded, Figure 7 (A), (B).
2. Then, lower the wall using crane. The flexible wire ropes will just rub against each other, deflect, and spring back into position, without any hindrance to the installation process Figure 7 (C).
3. A cottering bar is then placed in between the loops, before formwork is placed to cover the gap between walls.
4. Then, a suitable grout is poured from above to fill in the gap, Figure 7 (D).

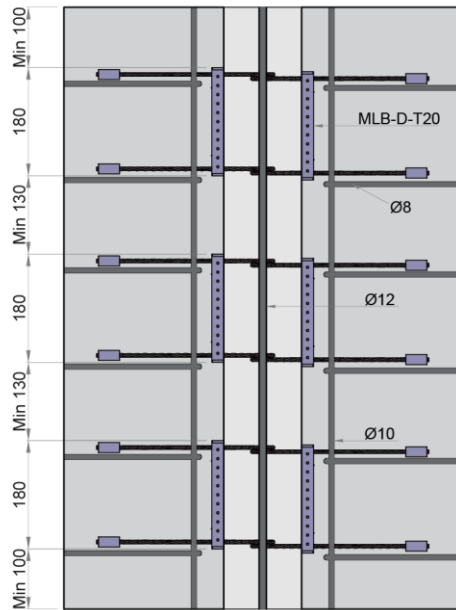
## Wall Reinforcement and Box Spacing Requirement

### Single Loop Box



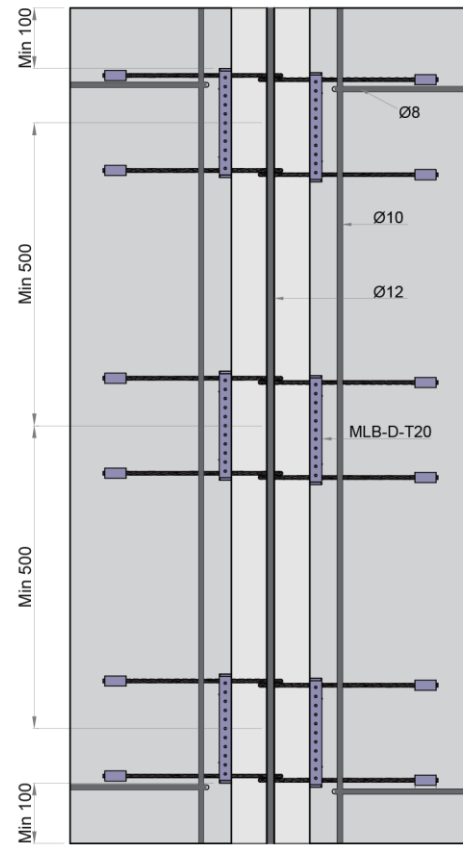
1. The existing reinforcement in wall with proper detailing can be consider for this requirement.
2. In the case of wall thickness is larger than 120mm and box spacing is more than 500mm no additional reinforcement is required except at the outer edge wire loop.

## Double Loop Box



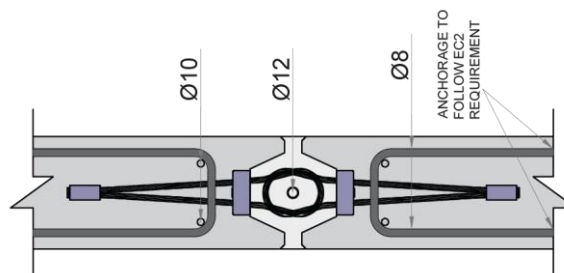
*Elevation View*

Min. 100mm Wall Thickness  
Box Spacing <500mm



*Elevation View*

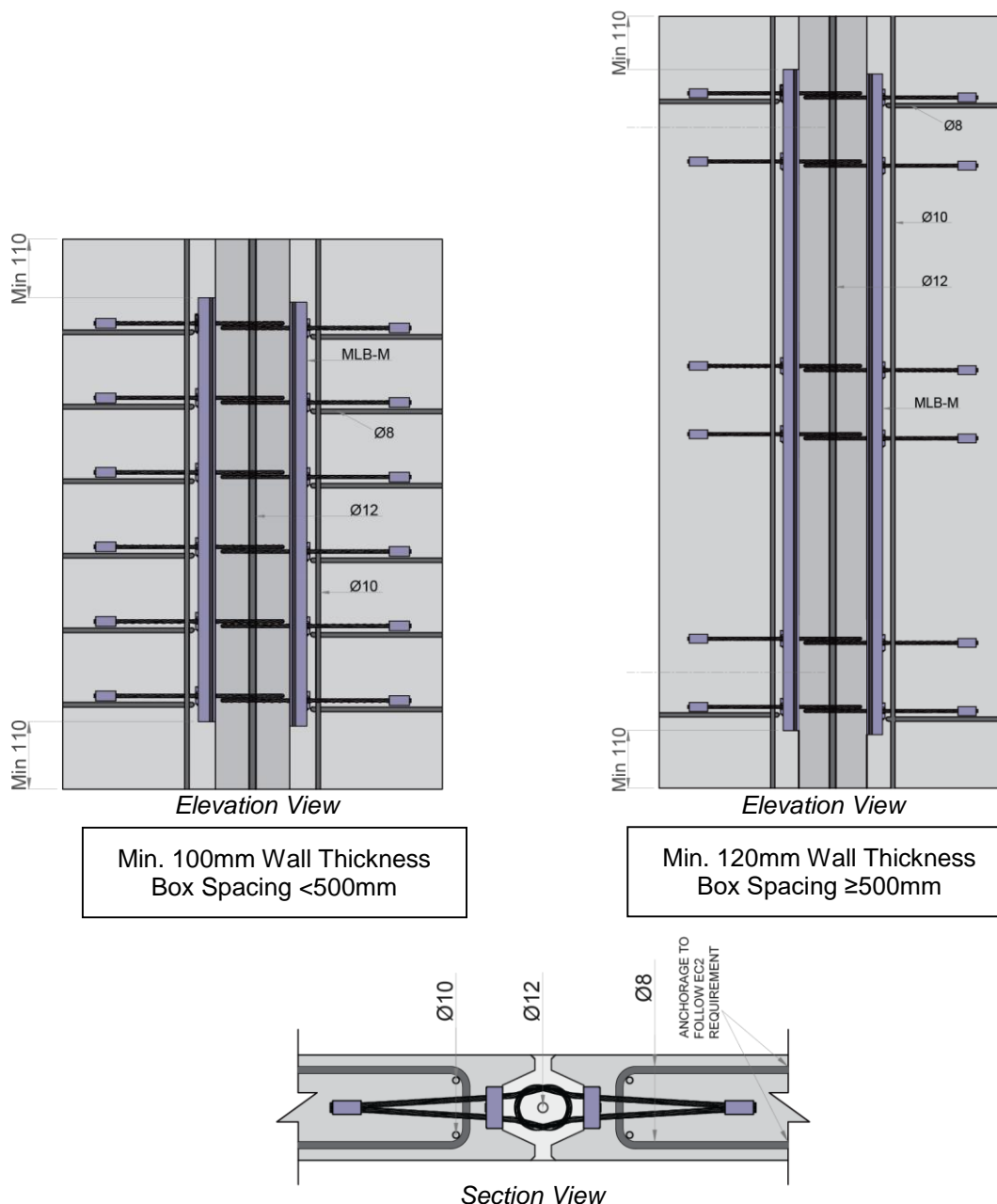
Min. 120mm Wall Thickness  
Box Spacing ≥500mm



*Section View*

1. The existing reinforcement in wall with proper detailing can be consider for this requirement.
2. In the case of wall thickness is larger than 120mm and box spacing is more than 500mm no additional reinforcement is required except at the outer edge wire loop.

## Multi Loop Box



1. The existing reinforcement in wall with proper detailing can be consider for this requirement.
2. In the case of wall thickness is larger than 120 mm and box spacing is more than 500 mm no additional reinforcement is required except at the outer edge wire loop

### Malaysia

28, Jln Anggerik Mokara 31/59,  
Kota Kemuning, Sekyen 31, 40460  
Shah Alam, Selangor, Malaysia  
Tel.: +603 5122 4182  
E-Mail: info.my@leviat.com

### Singapore

14 Benoi Crescent  
Singapore 629977  
Tel.: +65 6266 6802  
E-Mail: info.sg@leviat.com

### India

09, 3rd Floor, Orion Business Park,  
Ghodbunder Road, Kapurbawdi, Thane  
West, Thane, Maharashtra 400607, India  
Tel.: +91 022 2589 2032  
E-Mail: info.in@leviat.com

### Philippines

27F Office A, Podium West Tower, 12  
ADB Avenue, Ortigas Center,  
Mandaluyong City, 1550 Philippines  
Tel.: +63 2 7957 6381  
E-Mail: info.ph@leviat.com